



IGM Long Drill Bit for Wood

Dear customer,
thank you for the confidence you have placed in us with the purchase of your new IGM jig.

This manual was prepared for the owner and operator of **IGM Long Drill Bit for Wood** to promote safety during setup, operation and maintenance. Please read carefully and understand the information contained in this manual and accompanying documents. To obtain maximum service life and performance, use the machine according to these instructions and safety guidelines. Observe work safety.

We wish you a lot of work satisfaction and joy when working with the IGM Long Drill Bit for Wood.

1. Intended Use

With the help of an adaptor and a long drill, you can drill out long holes through the side of the door for electric locks and their cables etc.

1.1 Warranty

IGM always strives to deliver a high-quality and efficient product. The warranty is governed by the valid terms and conditions of IGM.

2. Product Specifications





| | | |
|------------|--------------------|--------------|
| 137-10950 | diameter x length: | 10 x 950 mm |
| 137-101250 | diameter x length: | 10 x 1250 mm |



3. Safety

Warning! Read all instructions and safety guidelines. Failure to follow safety instructions may result in damage to the jig and serious injury to the operator. Keep the manual for future reference.

- Check the technical condition of the jig and cutting tool before work. The cutting tool must be sharp and free from damage. Do not use the jig or cutting tool when damaged.
- The working area must be clean and well-lit. There must be sufficient space around the work area.
- Take care of your safety when working. Long hair, loose clothing and jewellery may cause injury. Wear suitable work clothing, footwear and eye, ear and respiratory protection.
- Watch your hands and fingers. Always use both hands when working with the jig.
- Ensure that the jig is held securely in place. If necessary, use a clamp. Never hold the jig with your hand while working!
- Keep the jig out of reach of children and unqualified persons.
- Do not leave the jig in a damp environment and do not expose it to rain.

3.1 Symbols

| | |
|---|--|
|  | Read the manual and all instructions carefully before use. |
|  | Wear head, ear, eye and respiratory protection. |
|  | Use gloves. |
|  | Warning of general danger. |

| | |
|--|--|
|  <p>MANUAL igmttools.info</p> | Scan the QR code and find the manual in your language. |
|  | Recycle package materials. |

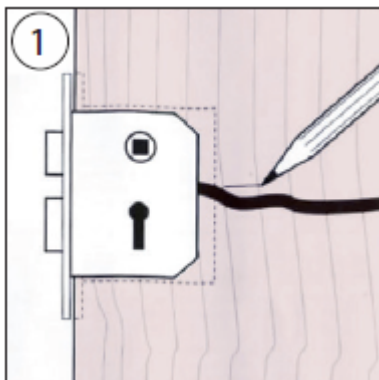
4. Package Contents

- Drill Bit

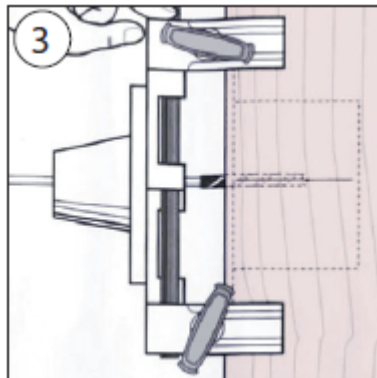
5. Operation

ATTENTION! Run drill at 2000-3000 RPM in a drill with a 11/2" (13 mm) chuck and, hammer action' OFF.

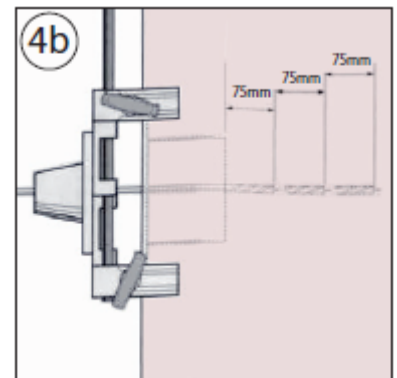
Recommended procedure



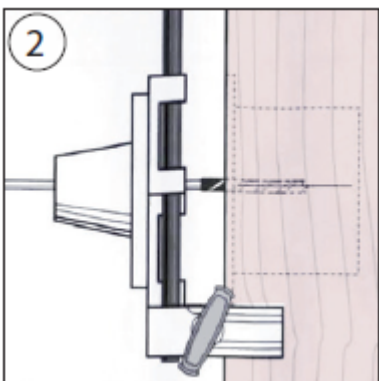
Having cut out the mortise and recess for the face plate, position the lock on the door face and mark where the electric cable exits the lock body. Remove the lock and extend the mark to the edge of the door.



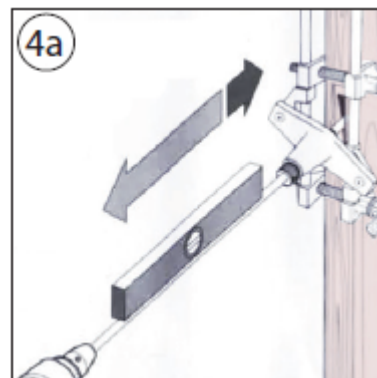
Slide the top clamp down until it sits on the housing slider and tighten the TOP clamp. The housing is now positioned and ready to start cutting through the door.



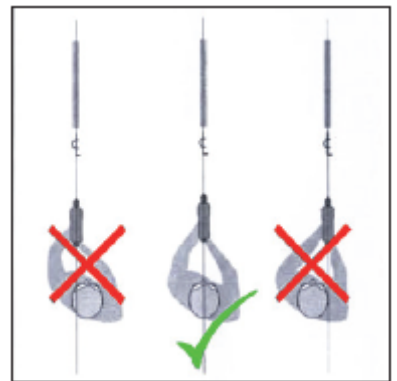
Repeat this procedure until the drill bit exits at the far edge of the door.



Insert the long drill bit from the Door-side of the housing and align it with the pencil mark. Ensure that the clamps are properly located on the door edge and lock the bottom clamp first. Check the drill lines up with the pencil mark.



Fit a power drill to the drill bit and while taking care to hold the drill straight and horizontal, (get help to start), drill 75 mm (3") into the door, don't force it, then fully withdraw the bit to clear away all wood dust.



VERY IMPORTANT

To make sure that the drill cuts straight, it is very important to only apply light pressure when drilling and to allow the drill to do the work. Forcing the drill could make it go askew.

6. Accessories

Recommended accessories are listed on the IGM website.

Caution! Installing unapproved accessories may cause damage to the jig and serious injury. Use only accessories recommended for this jig by IGM.